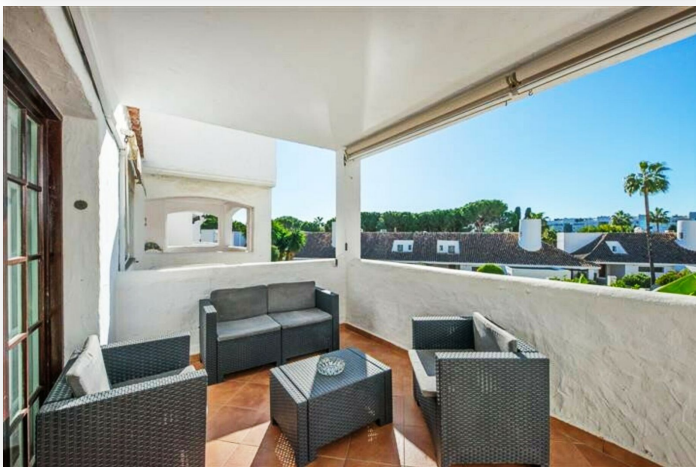


Middle Floor Apartment in Puerto Banús

Price: 520,000 EUR

Reference: BIS2831603 Bedrooms: 3 Bathrooms: 2 Plot Size: 0m² Build Size: 100m² Terrace: 11m²



Location: Puerto Banús

Large apartment in Villa Marina Puerto Banus.

The property offers spacious lounge/dining with fire place, open plan new kitchen , direct access to a south faced terrace with pool view, master bedroom with en suite bathroom and two guest bedrooms with bathroom.

Communal parking.

Closed complex just a few minutes' walk to the beach and all kind of amenities.

Features:

Setting

Beachside
Close To Shops
Close To Sea
Close To Schools
Close To Marina

Pool

Communal

Features

Covered Terrace
Private Terrace
Marble Flooring

Garden

Communal

Category

Beachfront

Orientation

South
West

Climate Control

Air Conditioning
Pre Installed A/C
Fireplace

Furniture

Fully Furnished

Security

Gated Complex

Condition

Good
Recently Renovated

Views

Garden
Pool

Kitchen

Fully Fitted

Parking

Communal