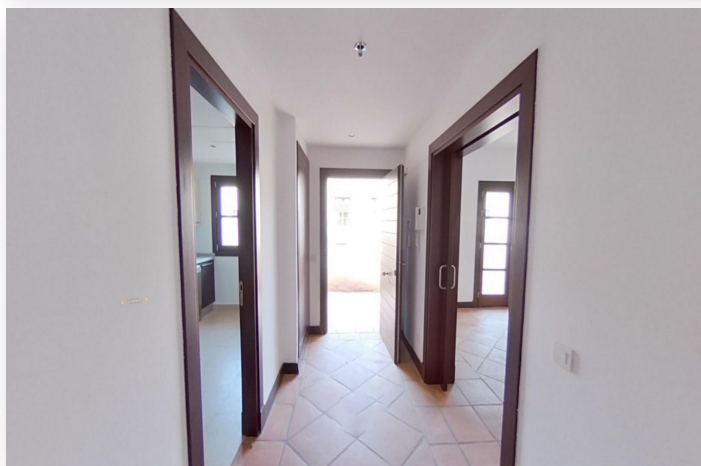


Townhouse in Benahavís

Price: 333,400 EUR

Reference: R3923560 Bedrooms: 3 Bathrooms: 3 Plot Size: 0m² Build Size: 287m² Terrace: 0m²



Location: Benahavís

This magnificent semi-detached house consists of three floors meticulously designed for your comfort and lifestyle. In the basement, you will find a large garage, a bright patio, a bedroom, an additional bathroom, a practical laundry room, a workshop for your projects and a hallway that connects with the other areas of the house.

On the ground floor, you will discover a modern and functional kitchen, a cozy living-dining room perfect for family gatherings, a hallway that connects to the first floor and an entrance porch and terrace to enjoy the outdoors.

Going up to the first floor, you will receive two elegant bedrooms, each with its own bathroom for greater privacy and comfort. In addition, both bedrooms have private balconies that offer stunning views of the surroundings.

Access to this wonderful home is through an exterior staircase that begins on the ground floor, guaranteeing your privacy and facilitating your daily life.

This property is a unique opportunity for those who value space, comfort and a privileged location.

Townhouse, Benahavís, Costa del Sol.

3 Bedrooms, 3 Bathrooms, Built 287 m².

Setting : Mountain Pueblo, Close To Golf, Close To Town, Close To Schools, Close To Forest, Urbanisation.

Orientation : South.

Condition : Good.

Pool : Communal.

Climate Control : Air Conditioning, Fireplace.

Views : Mountain, Country, Panoramic.

Features : Covered Terrace, Fitted Wardrobes, Near Transport, Private Terrace, Ensuite Bathroom, Courtesy Bus.

Furniture : Not Furnished.

Kitchen : Partially Fitted.

Garden : Communal.

Parking : Garage.

Utilities : Electricity, Drinkable Water, Telephone.

Category : Bargain, Beachfront, Cheap, Distressed, Golf, Holiday Homes, Investment, Luxury, Repossession.

Features:

Setting

Mountain Pueblo
Close To Golf
Close To Town
Close To Schools
Close To Forest
Urbanisation

Pool

Communal

Features

Covered Terrace
Fitted Wardrobes
Near Transport
Private Terrace
Ensuite Bathroom
Courtesy Bus

Garden

Communal

Category

Bargain
Beachfront
Cheap
Distressed
Golf
Holiday Homes
Investment
Luxury
Repossession

Orientation

South

Climate Control

Air Conditioning
Fireplace

Furniture

Not Furnished

Parking

Garage

Condition

Good

Views

Mountain
Country
Panoramic

Kitchen

Partially Fitted

Utilities

Electricity
Drinkable Water
Telephone